
Great Golf Courses of the World Screen Savers

User's Guide

COSMI Corporation
2600 Homestead Place
Rancho Dominguez, California 90220
voice (310) 886-3510
fax (310) 886-3517

COSMI EUROPE, LTD.
Weir Bank, Bray on Thames
Maidenhead, Berkshire SL6 2ED
United Kingdom
voice +44 (0) 1628 762686
fax +44 (0) 1628 762685



SYSTEM REQUIREMENTS

Operating System

Your computer must have Microsoft Windows 95, Microsoft Windows 98, Microsoft Windows NT 4.0, or higher versions of these operating systems.

Disk Space

This program requires approximately 12 megabytes of space on your hard drive.

Hardware



A mouse or pointing device is required.



To access our web site you must have a modem and a connection to the Internet.

INSTALLATION INSTRUCTIONS

USING WINDOWS 95, WINDOWS 98, OR WINDOWS NT 4.0

1. Place the CD into your CD-ROM drive.
2. In the start-up screen click on START, then click on RUN.
3. Type in D:\CDSETUP and press Enter. (If your CD-ROM drive is not D, then change it to the letter associated with your CD-ROM drive.)
4. Follow any instructions that appear on the screen.

WELCOME TO GREAT GOLF COURSES OF THE WORLD SCREEN SAVERS

Great Golf Courses of the World Screen Savers provides you with 10 different screen saver series – each containing 20 beautiful images of golf courses and golfing from around the world.

You are licensed to install one copy of the program and of each screen saver on one computer for your own personal use.

SETTING UP A SCREEN SAVER

Installation of Each Saver

Each screen saver is provided in a "package" file. **A screen saver must be installed in Windows before it can be used.** This is required *once for each individual screen saver*. This is a requirement of Windows.

Great Golf Courses of the World Screen Savers provides an automated setup for each screen saver.

To select a screen saver to install, run the Great Golf Courses of the World Screen Savers program. A shortcut for this program is created when you install the CD:



The image collections are named for types of old-fashioned golf clubs. Grand Slam is ALL of the savers. NOTE: This may be extremely slow on machines that have relatively small amounts of memory or slower processor speeds. To install a screen saver, click on the saver of your choice, and then click on the OK-Install button.

Follow the prompts to install the screen saver and make it available for your use.

OTHER OPTIONS

- The Help button activates help (this file).
- The About button shows copyright and version information.
- The Close button ends the program and returns to Windows.

SETTINGS

Wallpaper, Security, Display

After the screen saver is installed, you will then see the following options dialog box:

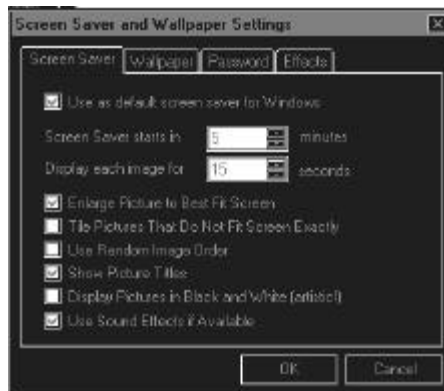


PREVIEW

The Preview choice shows you the screen saver without needing to wait for the system to be idle.

SETTINGS

The Settings button is the most important button. You will see the following "tabbed notebook:"

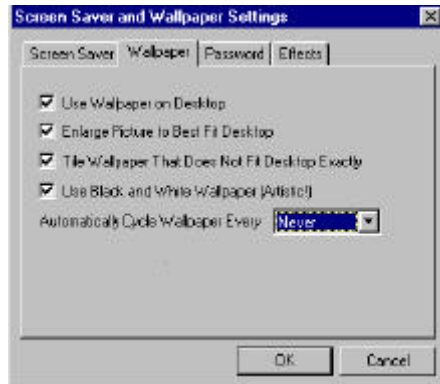


If you select Use as default screen saver for Windows, the saver currently on the screen will become the saver activated when you are idle. You may customize it when the saver starts, as well as select how long each image will be shown.

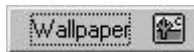
The other advanced settings on the Screen Saver page include:

- Enlarge Pictures to Best Fit Screen (not recommended; images are already optimized for VGA).
- Tile Pictures That Do Not Fit Screen Exactly (not recommended).
- Use Random Image Order (matter of personal taste).
- Show Picture Titles (not recommended).
- Display Pictures in Black and White (not recommended).
- Use Sound Effects if Available (matter of personal taste).

Wallpaper is the image displayed on your desktop. You may switch between several different wallpaper types.



To use an image as wallpaper, highlight the image and then click on the Wallpaper button:



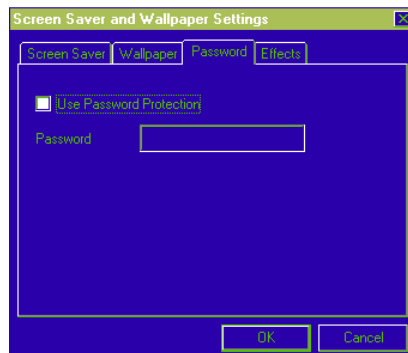
The program will automatically set the current image as your wallpaper.

The other advanced settings on the Wallpaper page include:

- Use Wallpaper on Desktop (matter of personal taste).
- Enlarge Picture to Best Fit Desktop (not recommended).
- Tile Wallpaper That Does Not Fit Desktop Exactly (not recommended).
- Use Black and White Wallpaper (matter of personal taste).
- Automatically Cycle Wallpaper (matter of personal taste).

PASSWORD

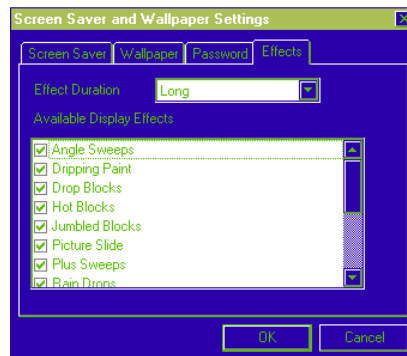
The Password page selects whether or not the screen saver will require a password to close:



IMPORTANT NOTE ON PASSWORDS: If you choose to password protect your screen saver, and if you wish to change or to eliminate the password at a later time, DO NOT use the Windows Control Panel Display icon to make the change. Make the change within the setup program provided with the saver.

EFFECTS

The Effects page allows you to select which effects will be used between images. Select the effects available as you see fit.



Changing Screen Savers

After you have installed a screen saver once, you may select it or change to no saver, or to any other screen saver. This is done through the Windows Control Panel.

To reach the control panel, click on the Start button and select Settings, then Control Panel. Now select the Display icon.

You may then manage your screen savers from the Screen Saver tab:



Your screen may vary due to different installed equipment.

Windows recognizes the settings that you used when you installed a saver. You may change the settings as you see fit.

For more information on the settings, please consult Windows help.

BONUS PROGRAMS

Sliding Picture Puzzle Challenge & Golf Clip Art

Detailed information on these two bonus programs is provided online for your convenience.

Visit Us On The Web

Visit us from time to time at www.lrhsavers.com on the World Wide Web. We'll have additional free programs and special offers just for you. We hope to meet you on the web.

SUPPORT

We encourage all of our users to provide comments and suggestions about this program. This program is supported by voice, fax and Internet e-mail.

Voice

For telephone support, call COSMI's Customer Service at (310) 886-3510 during the hours below. (Note: All times are in the Pacific Standard Time zone.)

Monday through Thursday, 8:30 am - 12:00 noon and 1:00 pm - 4:00 pm
Friday, 8:30 am - 12:00 noon.

☒ COSMI is very proud to be one of the few remaining software publishers to provide no charge customer support!

E-mail, Fax and Internet

Support questions may be addressed to: support@cosmi.com.

You may fax us at (310) 886-3517.

Be sure to visit COSMI's Internet Web site: <http://www.cosmi.com>.

ACKNOWLEDGMENTS

Photo Credits

Photos were obtained from the following: Art Today; PhotoDisc, EyeWire, Adobe, Corel, The Broadmoor, Kaanapali Golf Courses

Each image is copyright of its respective creators/holders. Not affiliated with or endorsed by any golf courses depicted herein.

PROGRAM DESCRIPTION

Travel the world and visit great golf courses. Over 200 images show golf courses from five continents. As a special bonus, Great Golf Courses of the World has 200 great pieces of never before published color golf clip art for use in any Windows word processing or desktop publishing program. Features Sliding Picture Puzzle, Create Your Own Screen Saver and a bonus sound effects collection. You'll also be able to download bonus screensavers, utilities and more from this program's web site. It's a great gift that keeps on giving! Fore!

Great Golf Courses of the World is © 1999 by The Little Red Hen LLC. Portions © Art Today; © Photodisc, © Eyewire, © Adobe, © Corel, © Auralis, Inc., and © 1999 COSMI Corporation. All rights are reserved worldwide. Copying without the permission of COSMI is expressly prohibited except for the purpose of making one working copy for your own personal use. Contact COSMI for licensing arrangements.

WARRANTY

COSMI makes no warranty of any kind, express or implied, including without limitation any warranties of merchantability and/or fitness for a particular purpose. COSMI shall not be liable for any damages, whether direct, indirect, special or consequential arising from a failure of this program to operate in the manner desired by the user. COSMI shall not be liable for any damage to data or property that may be caused directly or indirectly by use of this program.

The disk on which this software is recorded will be replaced within 90 days of purchase if found to be defective in material or workmanship. This shall constitute the sole remedy of purchaser and the sole liability of COSMI Corporation.

IN NO EVENT WILL COSMI BE LIABLE FOR ANY DAMAGES, INCLUDING ANY LOST PROFITS, LOST SAVINGS OR OTHER INCIDENTAL OR CONSEQUENTIAL DAMAGES ARISING OUT OF YOUR USE OR INABILITY TO USE THE PROGRAM, OR FOR ANY CLAIM BY ANY OTHER PARTY.

The License Agreement and Warranty shall be construed, interpreted and governed by the laws of the state of California.

COSMI CORPORATION
2600 Homestead Place
Rancho Dominguez, CA 90220
voice (310) 886-3510
fax (310) 886-3517

COSMI EUROPE, LTD.
Weir Bank, Bray on Thames
Maidenhead, Berkshire SL6 2ED
United Kingdom
voice +44(0) 1628 762686
fax +44 (0) 1628 762685

E-mail: support@cosmi.com

Internet Web site: <http://www.cosmi.com>

995250
ROM-609M